



### GROW YOUR NETWORKING CAPABILITIES WITH MANAGED FRAME RELAY'S SPEED, AND FLEXIBILITY

Comprehensive worldwide networking solutions. Premier routing and switching equipment. Plus all the expert management and maintenance services required to keep your data moving reliably worldwide. So you can focus on your core business.

Utilize the strength of Global Crossing Managed Frame Relay Services. Capabilities include worldwide network equipment design and engineering, implementation management, installation, lifecycle management; equipment rental and break/fix maintenance support functions for FR mission critical Data networks.

With Managed Frame Relay, you can easily support multiple applications and service levels – such as voice, IP, and data file transfers – worldwide over a single connection with the multiple service levels by the Global Crossing Managed Frame Relay Service. When seamlessly integrated with IP VPN even more flexibility for remote office, telecommuting and non-critical application can be supported.

#### FEATURES & BENEFITS

- Replace multiple dedicated line connections and reduce costs
- Fast, reliable data transmission supports bursty traffic, eliminates network congestion
- The reach and capacity of one of the world's most extensive Frame Relay/ATM networks allows you to link sites around the globe free from interoperability concerns
- Single provider relationship streamlines contracts, provisioning, and ongoing service
- 24x7 network monitoring, service, and support backs transmission reliability

#### SERVICES

Links multiple, geographically diverse users over the worldwide Global Crossing network. Offers port speeds of 56/64K to T-1 or E-1 and DS-3. Includes consultation, provisioning, monitoring, and service and support. Service Level Agreements guarantee continued reliability.

#### GLOBAL CROSSING ALSO OFFERS THESE ENHANCED SERVICES

- Global Crossing Managed Services – Global Crossing provides worldwide managed services support for your CPE needs. Our capabilities include network and equipment management, design and engineering, implementation, installation, operations and life-cycle management, and equipment rental functions.
- Global Crossing ExpressFrame<sup>SM</sup> – designed to expedite time-sensitive and mission-critical data, offering QoS options for your priority traffic
- Frame Relay to IP Interworking – designed to save you the costs of a VPC (virtual private circuit) for your IP access
- Global Crossing Zoned Frame<sup>SM</sup> (US only) – designed for businesses with three or more locations within the same Local Telephone District (LATA), maximizes your savings on local frame relay service
- Seamless integration with Managed IP VPN – Global Crossing's worldwide Frame Relay and ATM networks are designed for seamless integration with our MPLS-based IP VPN network so your solution is free from interoperability concerns

# GLOBAL CROSSING FRAME RELAY® SERVICE



## FRAME RELAY SERVICE

- End-to-end solutions-based network management
- High-speed, cost-effective data transmission
- Consolidated hardware and circuit requirements
- Worldwide, seamless networking
- Single provider convenience and reliability
- Now available via TDM or DSL access\*

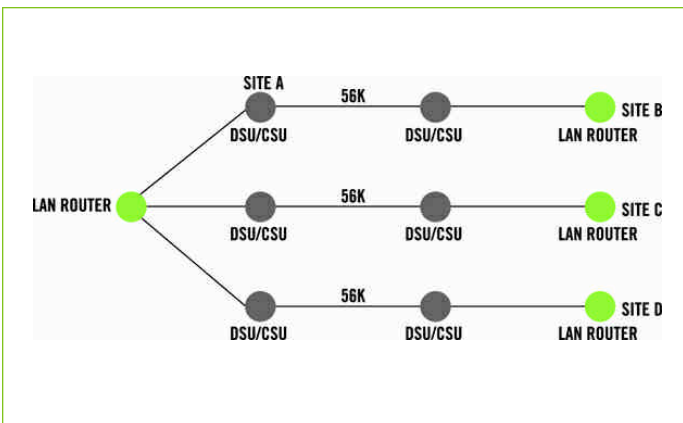
Drive communications costs down by reducing hardware and circuit requirements with Frame Relay. Get the performance and security of a private network with the economy of a shared network. Link your sites in over 500 cities in more than 50 countries on six continents.\*\*

Frame relay networks eliminate congestion and are ideal for bursty types of traffic. Enjoy more manageability and scalability with speed upgrades ranging from 56K/64K to T-1 or E-1 and DS-3 or E-3, depending on location. Build a logical migration path to ATM as your transport needs grow, thanks to full Frame Relay to ATM interworking. Deploy quickly with our world-class provisioning centers. Global Crossing Frame Relay also integrates seamlessly to our next generation Global Crossing IP VPN offering, which provides the QoS qualities of Frame Relay with the efficiency of IP.

## GUARANTEED PERFORMANCE

Service Level Agreements include the following metrics:

- Frame Delivery
- Network Availability
- Network Transit Delay
- Mean Time to Restore



## MAXIMUM RELIABILITY

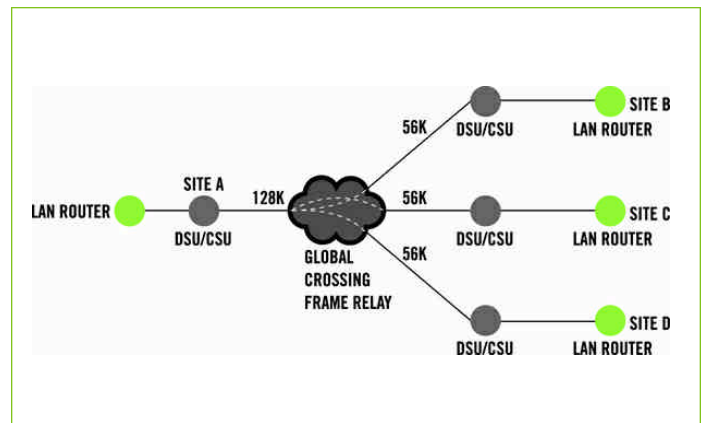
Redundant SDH/SONET and ATM ring architecture provides transmission uptime that's virtually bullet-proof. Network Operations Centers monitor and manage the Global Crossing network and switching systems 24x7, providing real-time problem diagnosis and resolution.

Our multilingual Customer Care Centers deliver convenient one-contact resolution for all network service issues.

## UCOMMAND®

With uCommand you are in control. This industry-leading online account management tool gives you access to the information you need securely and instantly. Access your account 24 hours a day to manage your network and services, obtain invoices, order new services, interact with customer service and more. It's easy and it's free. Visit <http://net.globalcrossing.com/tools.html> to learn more about uCommand features and availability.

**Step up to Global Crossing Managed Frame Relay service today. For current product specifications and availability, please visit [www.globalcrossing.com](http://www.globalcrossing.com).**



\*Some locations are available via the Global Crossing Extended Reach Managed Frame Relay network

\*\*Some geographic restrictions apply. Check with your account manager for details.

©2004 Global Crossing Holdings Ltd. Global Crossing, the 7 Cable Design, and uCommand are registered trademarks of Global Crossing Holdings Ltd. in the United States and other countries. Global Crossing Frame Relay Service is a registered trademark of Global Crossing Holdings Ltd. Zoned Frame and ExpressFrame are pending service marks of Global Crossing Holdings Ltd. Some services are subject to geographic availability. Other restrictions may apply. 574 496G 0104