

**Product Name:**

PAETEC's MPLS VPN

**Availability:**

PAETEC's MPLS VPN is now available in 151 markets, including the U.S., U.S. territories, and Canada.

**Ideal Customer Profile:**

Primary customers include corporations that currently use Frame Relay, ATM, or leased lines to link remote branches and/or mobile workers to their corporate network.

**CPE Requirements:**

The customer should consult an authorized PAETEC representative to ensure 100% compliance and operability:

- Customers must maintain a PAETEC-approved CPE device (e.g. ADTRAN or Cisco CPE)
- PAETEC must have access to the approved router when MPLS VPN with QoS is requested

## MPLS VPN | In Brief

### Product Description

PAETEC provides your company with a fully meshed, secure, and reliable network through Multi-Protocol Label Switching (MPLS). Your company's data information travels through PAETEC's private, national IP network, revolutionizing connections among your internal and external customers. MPLS VPN with Quality of Service (QoS) provides the ability to prioritize data and delivery to maximize available bandwidth with limited expenditures. In addition, MPLS VPN is available through "extended reach" to 151 markets.

### Product Capabilities

#### Private, Virtual Paths

PAETEC's private IP network ensures privacy and security as your data travels on virtual paths separate from other customers' applications

#### Fully Meshed Network

All locations are automatically inter-connected, allowing site-to-site communications without built-in network connections

#### QoS

Time-sensitive applications are granted precedence over less time-sensitive applications

#### Self-healing Network

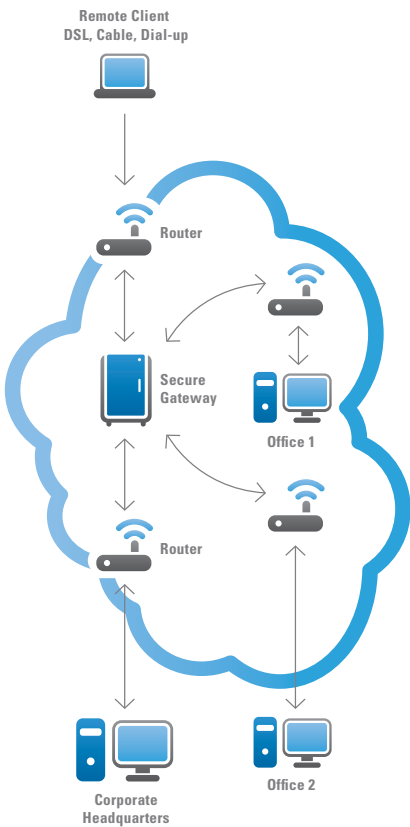
In the event of an outage, data is automatically rerouted to another path to prevent delays and congestion

#### Remote Access

Employees are able to securely access the corporate network anywhere, anytime

#### IP Multicast

You can optimize your bandwidth while utilizing content delivery solutions such as trading floor applications, video conferencing, corporate communications, distance learning, and distribution of software, stock quotes, news, and more



### Product Requirements

PAETEC requires that 70% of the customer’s locations must be directly connected to PAETEC’s network via T-1s (on-net).

PAETEC requires that the customer’s hub must be directly connected to PAETEC’s network via T-1s (on-net).

### Application One

The United Bank of Rochester, which supports nine local offices, currently routes its data transmissions through a local carrier’s Frame Relay network. In the near future, The United Bank of Rochester would like to expand, opening three more locations in the Rochester area. It decided to implement PAETEC’s innovative approach to business infrastructure: MPLS VPN. Instead of physically connecting the new sites to each of the existing nine locations, PAETEC can enable site-to-site connections using MPLS VPN. Each site’s data applications are routed through PAETEC’s private network, and then distributed to the appropriate destinations. By virtually linking all locations through PAETEC’s MPLS network, future IP-driven applications, such as Voice over IP, can travel over the company’s existing MPLS network. The United Bank of Rochester’s potential for physical and network expansion would not be hindered by its infrastructure.

### Application Two

Sales executives employed by Thomas Telecom Corporation rely heavily on communication between 12 countrywide business offices and from remote locations to the corporate headquarters. In order to keep sensitive data secure from competitors and network hackers, PAETEC’s MPLS VPN was implemented. Now, Thomas Telecom Corporation’s data travels between its business sites across PAETEC’s private network. IP addresses are not visible or recognized on the public Internet, allowing a secure connection between multiple sites. From home or hotel locations, Thomas Telecom Corporation’s sales executives simply access the company network using their secure IDs. Data is then transferred to the final destination – which resides within the company’s private network – through a secure, encrypted tunnel on the public Internet. Regardless of physical location, employees are continuously conducting secure and private business communications.

### Application Three

At Fairport Financials, a sizable corporation with five regional business offices, data applications were previously routed on a Frame Relay network. Because of bandwidth restraints, time-sensitive applications were not delivered in a timely manner and the company's network was often congested. Due to these issues, Fairport Financials has implemented PAETEC's MPLS VPN. Now, by utilizing PAETEC's QoS control, data applications are prioritized according to time-sensitivity. Critical applications, which require all components of the application to be delivered simultaneously (e.g. presentations utilizing audio and visual elements), take precedence over less critical applications such as e-mail. QoS labels and filters mission-critical applications according to their elements, granting precedence to time-sensitive transfers. Fairport Financials' data applications are streamlined through the network, facilitating full port speed for each application and limiting bandwidth restraints. PAETEC utilizes QoS to optimize application delivery performance and bandwidth availability.